

# Last One Remaining



Hildersley, Ross On Wye, Hfds, HR9 7ZR.

Asking Price £575,000 Freehold

**RICHARD BUTLER**  
SALES AND LETTINGS

---

A brand new detached four bedroom executive home with double garage, built to an extremely high standard with an option to include kitchen upgrades of quartz worktops. Situated on a small development of just seven properties on the fringes of Ross-on-Wye. Twickenham Close is a small development of seven new four bedroom executive homes on the outskirts of the market town Ross-on-Wye. Situated on its own private drive off the A40 with easy access to the M50 and A40 dual carriageways providing good road links to the Midlands via the M5 and South Wales via the M4. The regional centres of Hereford and Gloucester are approximately 14 miles and 18 miles respectively.

- Brand new executive four bedroom detached property of approximately 2000 sq ft
  - Beautiful bespoke kitchen with built in appliances, quartz worktops
  - Engineered oak herringbone flooring in kitchen, utility and entrance
  - Anthracite double glazed windows and aluminium bi-fold doors
  - Double garage and large gardens
  - Electric car charging point
  - Build Zone 10 Year Warranty
  - Potential to Convert One Garage to an Additional Room
- 

**The property is entered via:** Canopied covered entrance with lighting and modern composite front entrance door leading into:

**Reception Hall:** With herringbone engineered oak flooring. Radiator. Potential access to garage, which could be converted to an additional room. Oak faced door into:

**Cloakroom:** Beautifully fitted with concealed cistern WC and painted wainscotting. Vanity unit with circular wash hand basin on a marble top and cupboard beneath and mixer tap. Engineered oak herringbone flooring, radiator. Double glazed window to front aspect.

**Cloaks Cupboard:** With potential for access into garage subject to building consent.

**Living Room: 16'2" x 12' (4.94 x 3.8m).** A lovely size living room with plenty of power points, inset ceiling LED spotlights, radiator. Wiring for wall mounted TV, sockets etc. The property has a fireplace which is currently plaster boarded over within this room but could be opened up with potential for open fire.

**From the hallway, door leads into:**

**Fabulous Open Plan Living/Dining Kitchen Area:** With engineered oak herringbone flooring throughout. 13'6" wide southerly aspect bi-fold doors opening onto patio area and garden. Beautifully fitted kitchen area with a range of high quality bespoke grey painted Shaker style base and matching wall cupboards. Integrated appliances to include concealed fridge/freezer. Hotpoint stainless steel oven and grill with cupboard above and beneath.







Hotpoint induction four ring electric hob with ceiling mounted extractor over. Hotpoint integrated dishwasher. Space for wine cooler. Plenty of storage cupboard and shelving. Quartz worksurfaces extending over to provide a breakfast bar with upstands and under mounted double bowl sink unit with flexible mono block mixer. Additional double glazed window to rear garden. Door into:

**Utility Room: 8'7" x 6'5" (2.66 x 1.2m).** Tall storage cupboard with plumbing and space for washing machine. Shelf and power point ideal for condensing dryer. Base unit with Silestone worktop and under mounted sink and mono block flexible tap. Inset ceiling spotlights. Glazed double door leading out to garden. Engineered oak herringbone flooring, radiator, extractor fan, ceiling spotlights.

**From the living/kitchen/dining room:** Wide double oak faced door into:  
**Separate Dining Room/Study: 15' x 15'6" (4.61 x 4.76m).** Or possibly additional sitting room. uPVC double glazed window overlooking the southerly aspect garden. Radiator, power points. Inset ceiling spotlights.



**From the reception hall, staircase leads to:**

**First Floor and Part Galleried Landing:** With access to roof space being part boarded with ladder and housing gas fired boiler supplying domestic hot water and central heating. Oak faced doors throughout and into large airing/storage cupboard. LED ceiling spotlights.

**Bedroom 1: 15'10" x 13' (4.83m x 3.96m).** An extremely spacious bedroom with plenty of space for fitted wardrobes. Wide double glazed window to front aspect with far reaching views over surrounding countryside. Radiator, TV point, power points, inset ceiling spotlights. Door into:

**En-Suite Shower Room:** Beautifully presented and exceptionally well equipped having bespoke vanity unit with storage drawers, marble counter top with circular wash hand basin and wall mounted mixer tap. WC with concealed cistern. Corner glazed and tiled shower cubicle with mains shower and twin mixer head. Attractive marble tiled surround and complimenting marble effect flooring. Painted panelling to dado level. Chromium heated towel radiator, inset ceiling spotlights, extractor fan and double glazed window to front aspect.

**Bedroom 2: 12'1" x 10'1" (3.68m x 3.07m).** A superb guest room with uPVC double glazed window to front aspect with lovely views over surrounding countryside. Radiator, power points, TV point, inset ceiling spotlights. Oak faced door into:

**En-Suite Shower Room: 9'10" x 5'10" (3m x 1.78m).** Again, exceptionally well equipped and beautifully styled with his n hers vanity unit with dual circular wash basins on a Silestone counter top with twin wall mounted mixer taps, concealed cistern. Glazed walk in shower cubicle with attractive marble effect tiled surround and twin head mixer. Painted panelling to dado level and complimenting marble effect flooring. Shaver point. Chrome heated towel radiator. uPVC double glazed window to side aspect.

**Bedroom 3: 14'2" x 10'10" (4.32m x 3.3m).** No shortage of space in this exceptionally good sized double bedroom with uPVC double glazed window to rear aspect. Inset ceiling spotlights, power points, TV point.

**Bedroom 4: 11'8" x 9'10" (3.58m x 3m).** Again, a good sized double room with uPVC double glazed window to rear aspect. Radiator, inset ceiling spotlights, power points, TV point.

**Family Bathroom:** Generous in size and beautifully equipped with bespoke vanity unit with Silestone counter top and dual wash hand basins, each having mono block wall mounted mixers. Modern panelled bath with wall mounted mixer tap, concealed cistern low level WC. Painted panelling to walls to dado level. Inset ceiling spotlights. uPVC double glazed window to rear aspect.

**Outside:** Block paved driveway leads to twin garage.

**Garage 1: 19'9" x 9'7" wide. (6.02m x 2.92m wide).** Steel up and over garage door which potential could be fitted a remote pack. The garage is served with plenty of power points, ceiling strip light. Connecting open walk way through to:

**Garage 2: 17' x 9'1" (5.18m x 2.77m).** Again, steel up and over door with potential to fit remote system. Power points and electric car charging point. Oak connecting door into utility room.

**Agents Note:** Potential to convert one of the garages to an additional room with access from hallway.

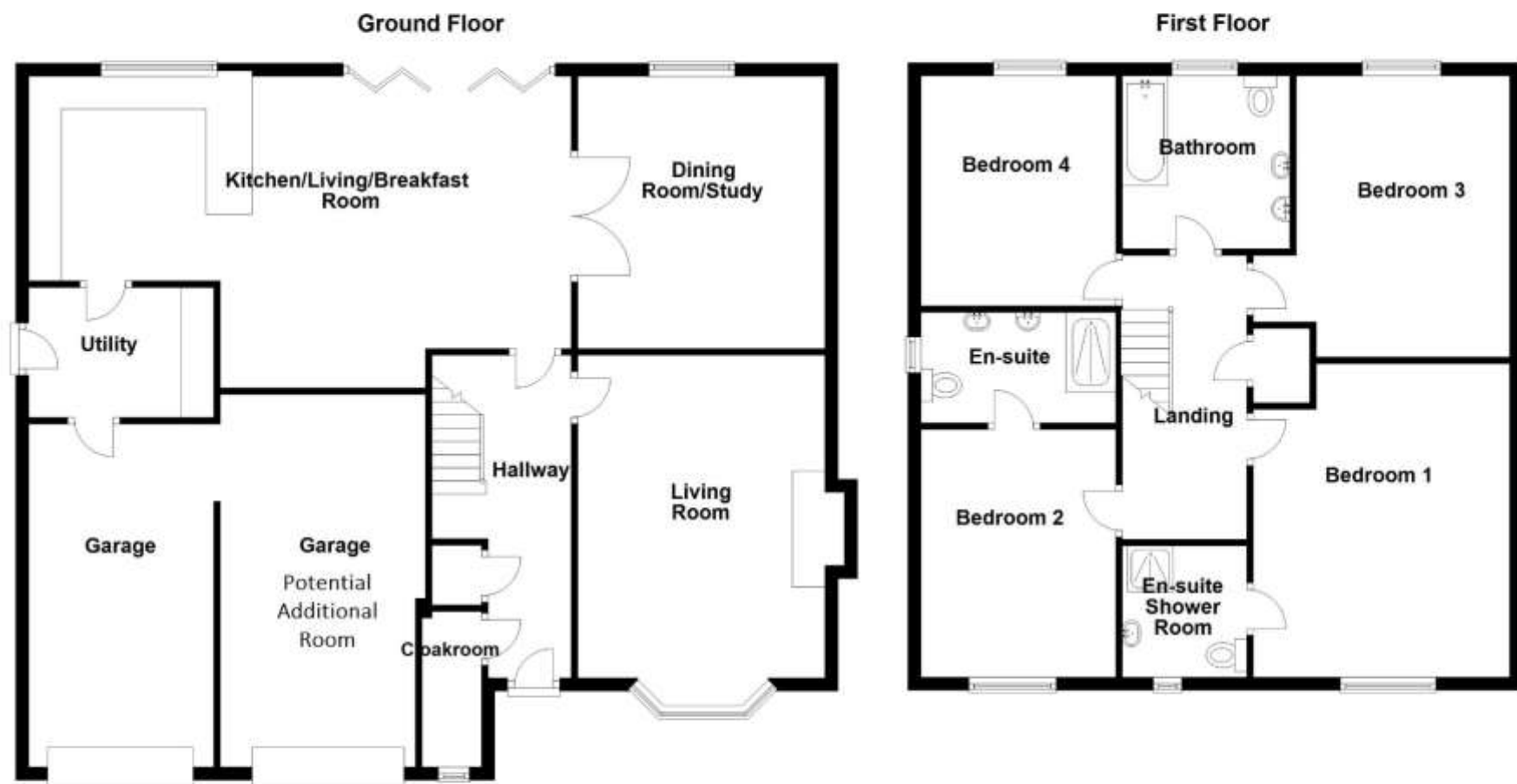
To the side of the property, gated access leads to the rear garden and additional pathway with access into utility room. The good sized rear garden is southerly facing and enclosed by close board fencing with lawn and patio area.

**Agents Notes:**

1. Specifications may change.
2. The land to the rear is currently being developed. Further information can be provided upon request.

**Directions:** From the centre of Ross-on-Wye proceed along Gloucester Road to the roundabout, take the third exit onto the A40 towards Gloucester. The development can be found a short distance on the right hand side immediately after the entrance to Chase View Veterinary surgery.





Whilst every attempt has been made to ensure the accuracy of the floor plans contained here, all items are approximate and no responsibility is taken for any error, omission or mis-statement. This plan is for illustrative purposes only and should be used as such by any prospective purchaser. The services, systems and appliances shown have not been tested and no guarantee as to their operability or efficiency can be given.  
Plan produced using PlanUp.

Consumer Protection from Unfair Trading Regulations 2008. The Agent has not tested any apparatus, equipment, fixtures and fittings or services and so cannot verify that they are in working order or fit for the purpose. A Buyer is advised to obtain verification from their Solicitor or Surveyor. References to the Tenure of a Property are based on information supplied by the Seller. The Agent has not had sight of the title documents. A Buyer is advised to obtain verification from their Solicitor. Items shown in photographs are NOT included unless specifically mentioned within the sales particulars. They may however be available by separate negotiation. Buyers must check the availability of any property and make an appointment to view before embarking on any journey to see a property  
The Data Protection Act 1998. Please note that all personal information by customers wishing to receive information and/or services from the estate agent will be processed by the estate agent, the team Association Consortium Company of which it is a member and team Association Limited for the purpose of providing services associated with the business of an estate agent and for the additional purposes set out in the privacy policy (copies available on request) but specifically excluding mailings or promotions by a third party. If you do not wish your personal information to be used for any of these purposes, please notify your estate agent.





01989 567979

15 Gloucester Road, Ross-on-Wye, Herefordshire, HR9 5BU  
sales@richard-butler.co.uk richard-butler.co.uk

team  
teamprop.co.uk

ideal property mark  
PROTECTED

The Property  
Ombudsman

RICHARD BUTLER  
SALES AND LETTINGS